

555 City Avenue

BALACYNWYD, PA

AVAILABLE FOR LEASE



CBRE

Hamilt
FOR PROFESSIONALS



555 City Avenue

BALA CYNWYD, PA

AVAILABLE FOR LEASE

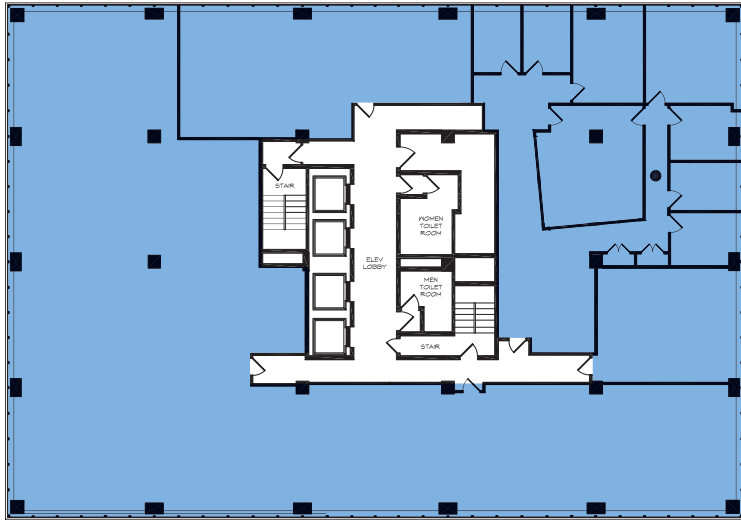
PROPERTY HIGHLIGHTS

- 119,000 SF Class “A” office building
- 11 stories
- 6/1000 parking ratio
- Located 1/8 mile from I-76
- Full service gross lease rate
- Recently updated common areas
- Three on-site building attendants/concierge
- On-site security in parking lot and lobby

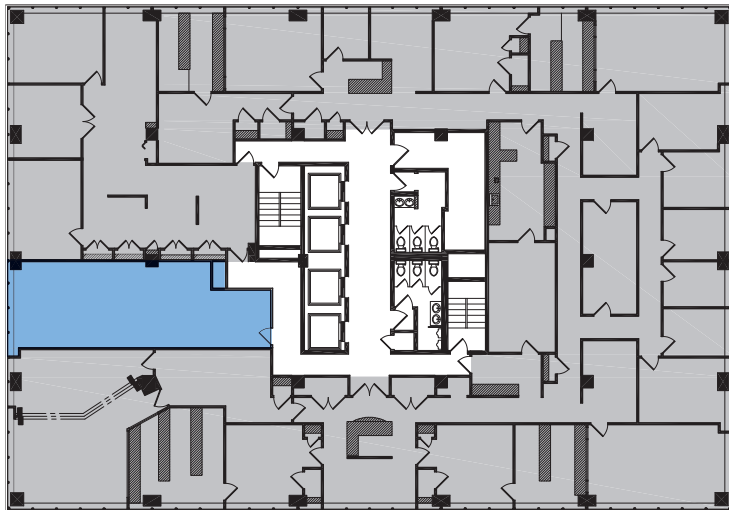
AVAILABILITIES

- First Floor Lobby Retail Boutique - 350 RSF
- Entire 2nd Floor - 11,200 RSF
- Suite 440 - 2,547 RSF
- Suite 530 - 3,764 RSF
- Suite 610 - 1,200 RSF
- Suite 700 - 11,100 RSF
- Suite 800 - 11,100 RSF
- Suite 910 - 2,735 RSF

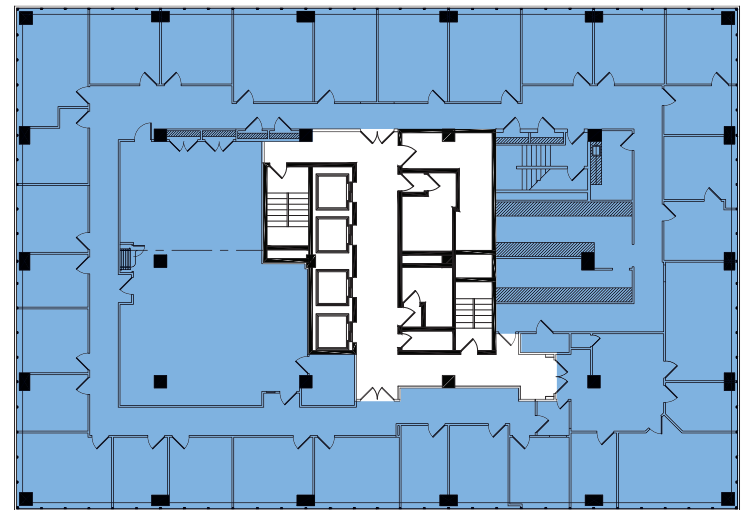
ENTIRE 2ND FLOOR - 11,200 RSF



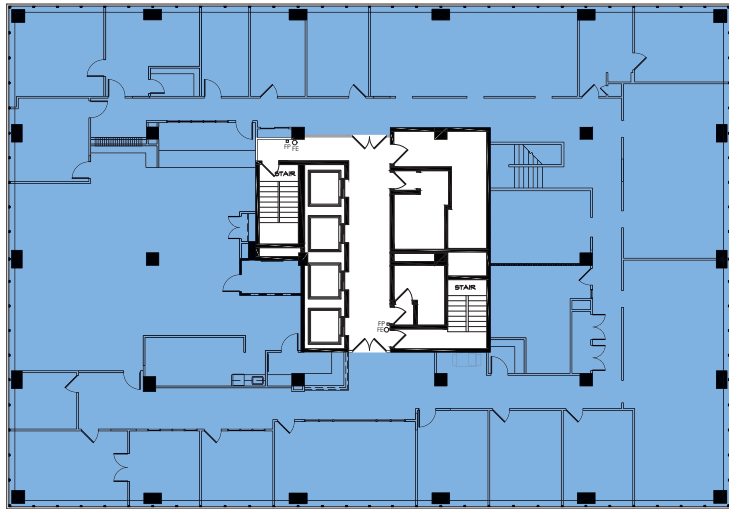
SUITE 610 - 1,200 RSF



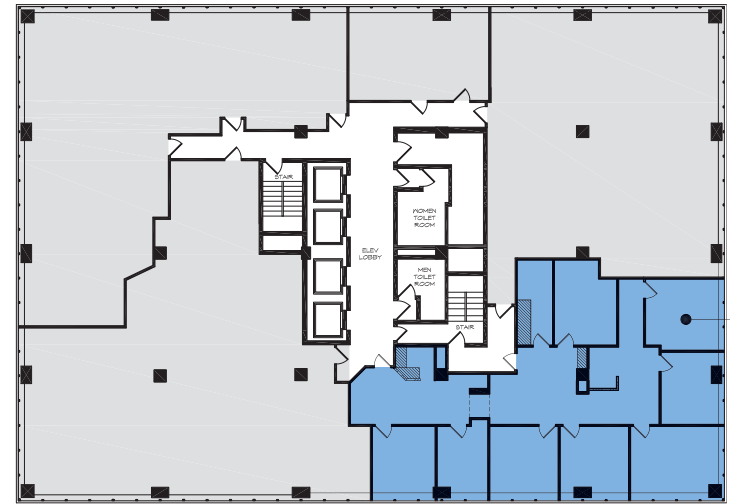
SUITE 700 - 11,100 RSF



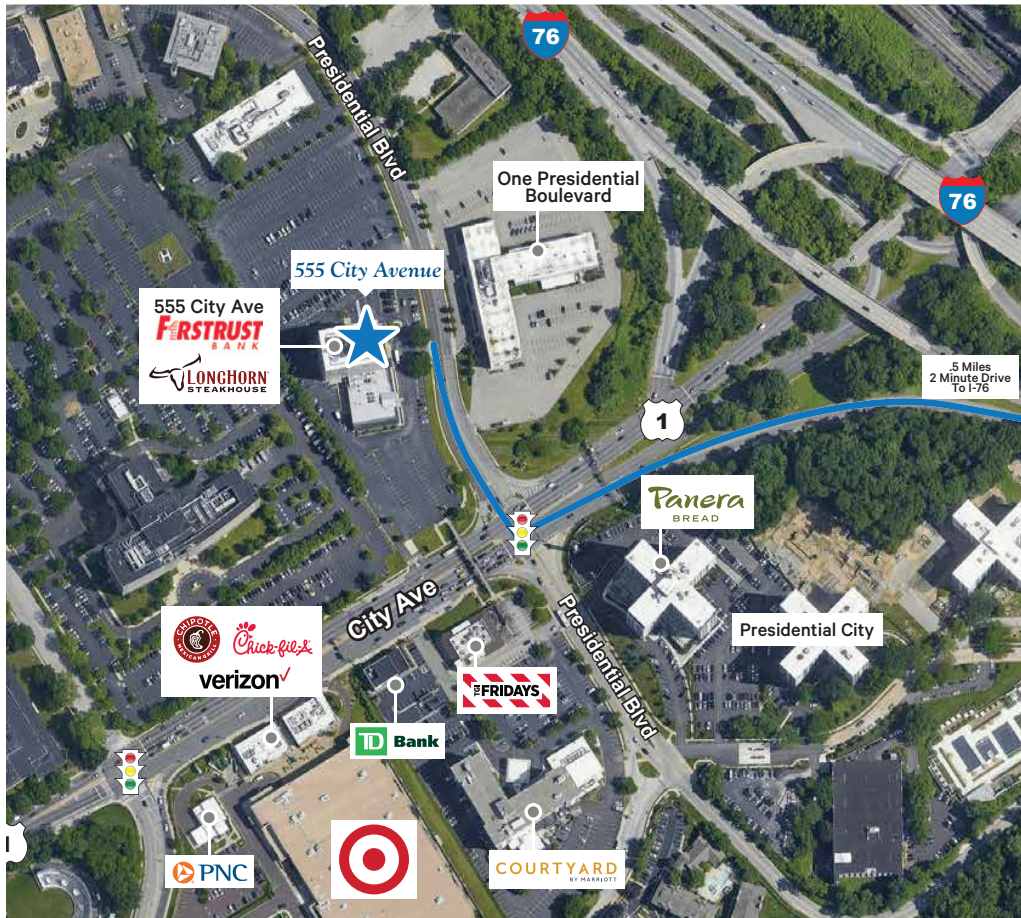
SUITE 800 - 11,100 RSF



SUITE 910 - 2,735 RSF

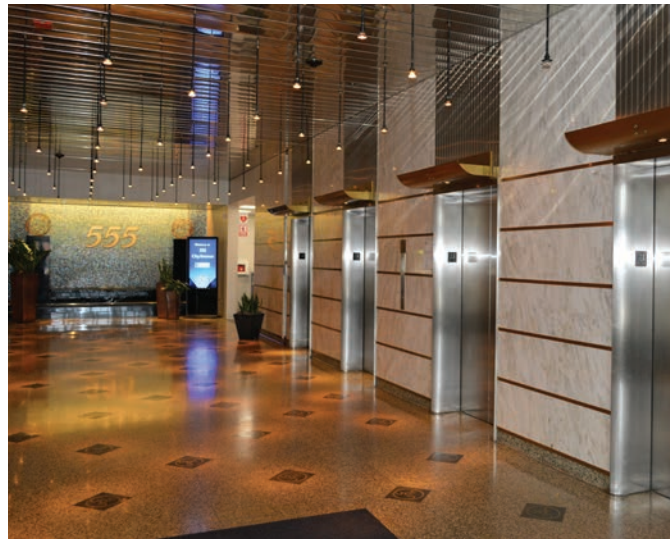


LOCATION



ON-SITE AMENITIES

- Firststrust Bank
- Longhorn Steakhouse
- 555 Gourmet Deli
- Haig & Co Salon





555 City Avenue

BALA CYNWYD, PA

FOR MORE INFORMATION,
PLEASE CONTACT:

SCOTT GABRIELSEN

EXECUTIVE VICE PRESIDENT

+1 610 308 5141

SCOTT.GABRIELSEN@CBRE.COM

TYLER KOPEN

ASSOCIATE

+1 610 256 4213

TYLER.KOPEN@CBRE.COM

CBRE

© 2021 CBRE, Inc. All rights reserved. This information has been obtained from sources believed reliable, but has not been verified for accuracy or completeness. You should conduct a careful, independent investigation of the property and verify all information. Any reliance on this information is solely at your own risk. CBRE and the CBRE logo are service marks of CBRE, Inc. All other marks displayed on this document are the property of their respective owners. Photos herein are the property of their respective owners. Use of these images without the express written consent of the owner is prohibited.